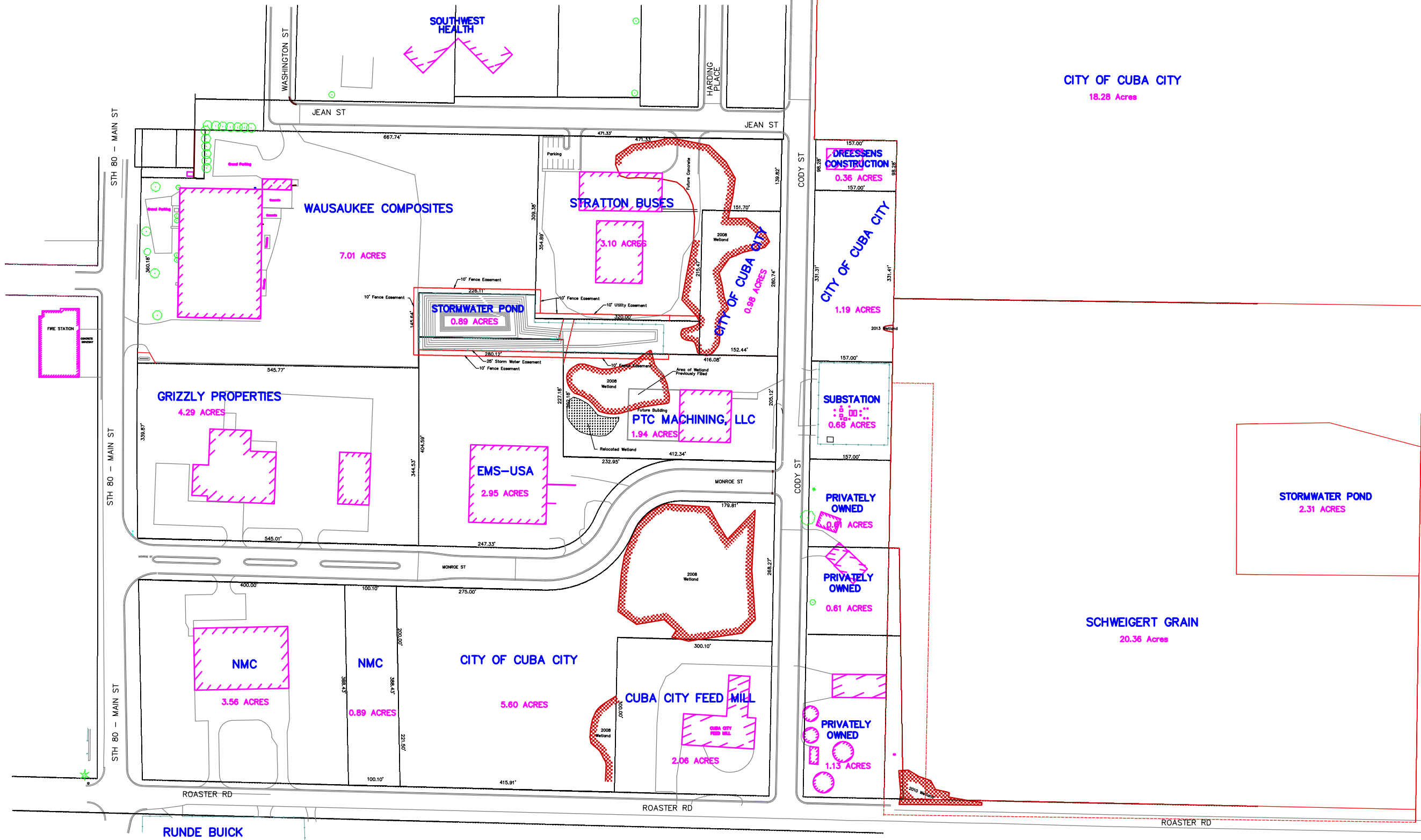

 NORTH
 Scale 1" = 200'

NOTE: This map is to be used as a visual aid or reference only the location of existing utilities are approximate and should be field verified. There could also be other utilities not shown on this map Diggers Hotline should always be called before digging.



REVISIONS
December 09, 2008
December 10, 2008
March 30, 2009
April 22, 2009
April 26, 2010
October 18, 2011
June 28, 2013

CITY OF CUBA CITY
INDUSTRIAL PARK
EXISTING CONDITIONS

ENGINEERING CONSULTANTS, INC.
 ENGINEERING SURVEYING ENVIRONMENTAL
 (608) 835-3310
 2600 C.T.H. Y - DODGEVILLE, WI 53533

DATE: November 10, 2008
 DESIGNED:
 DRAFTED:
 CHECKED:
 SHEET NO. 1
 OF 1 SHEETS